

Updated January 2024

Guidelines for Sewing Bags

Thank you for your interest in sewing for PoWeR! Book Bags! Below are some suggestions and guidelines for how to efficiently make use of the material and sew a sturdy bag. The size of the bag and the handles are the most important aspects to keep standardized, otherwise, how you finish the bag is up to you.



Dimensions: approximately **14" x 14"**

We have found this to be the best size for all of our bags, as it can accommodate everything we fill them with and any size book the child might choose. These dimensions do not have to be exact, however, please keep any variance to within an inch and a half of 14" x 14".

Cutting the Fabric:

Here is an example of how to use the yardage efficiently for a bolt that measures about 22" in width, folded.

- unwrap the bolt and lay out the fabric still folded
- cut the selvage off
- measure 7 - 1/2" from the fold edge and cut lengthwise (see **pic. a** and **fig. 1**)
- cut across the width at 30" length (see **pic. b** and **fig. 1**)
- for each segment 30" long there will three pieces of fabric 14- 1/2" x 30" (see **pic. c**)
- if the print of the fabric does not have a clear directional orientation, these pieces can be folded in half to attain a 14- 1/2" x 15", otherwise the pieces can be cut to square (see **pic. c**)

Handles:

For handles we use 5/8" grosgrain ribbon precut to 12" in length. Handles can be sewn from fabric but all handles should be no longer than 12" in length and once sewn into the bag, no longer than 10" in length and 4-1/2" in 'height' from the top of bag to top of handle curve. (see **fig. 2**) Our primary goal is for the handles to be too small for kids to fit over their heads so they can't hang the bag around their neck.

Suggestions for how to sew the bag:

With the printed material fronts facing each other, sew the side and bottom edges together with a straight seam and then double back with a zigzag stitch for a sturdy bag. (see **fig. 2**) Fold the top edge over twice, hiding the cut edge. Slip and pin the handles underneath the fold. (see **fig. 3**) Sew around the top making sure the stitches catch the handles securely.

Optional Step: Sewing a Flat Bottom

A flat bottom can be added once the bag's side seams are sewn or at the very end. Open the bottom corners and flatten them about 2" wide (see *pic. d*). Sew these shut as a small seam perpendicular to the side seams.

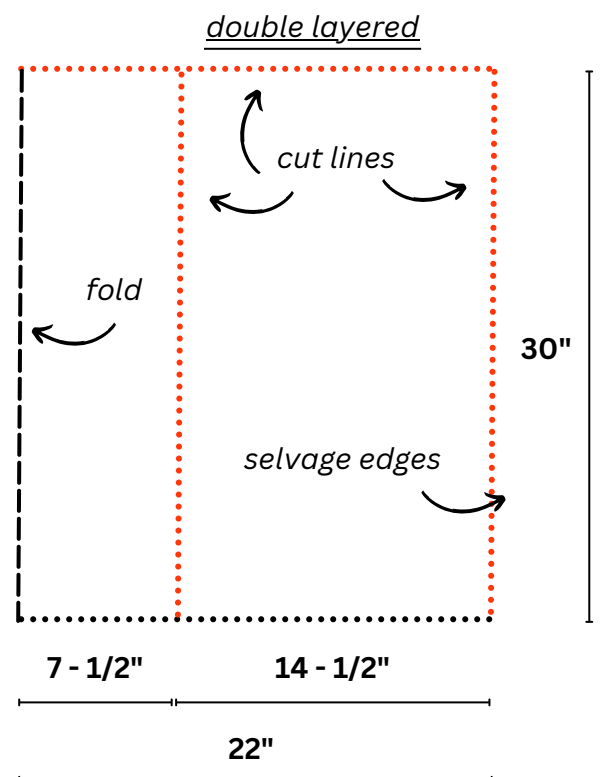
Add a Bag Tag:

Turn the bag right-side out and add the bag tag to one side of a handle and place the tag inside the top of the bag so it doesn't get bent.

pic. a



fig. 1

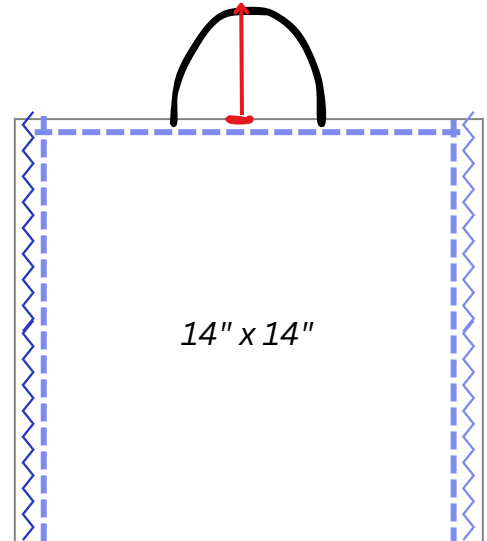


pic. b



fig. 2

handle is 4- 1/2" tall



pic. c

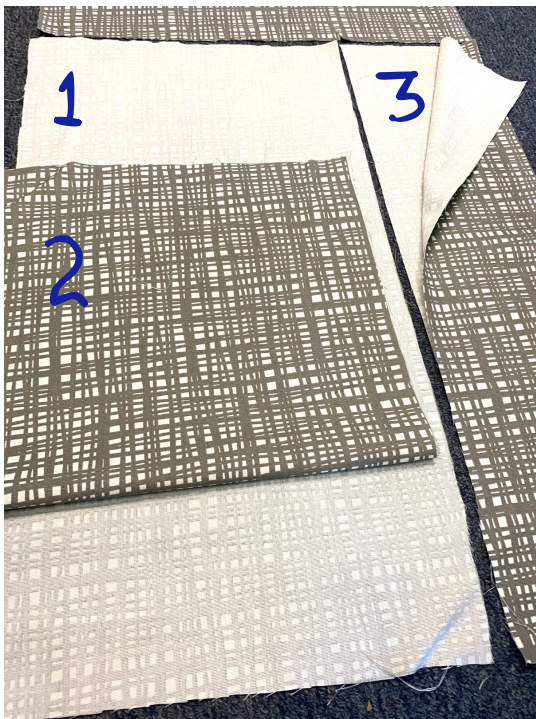
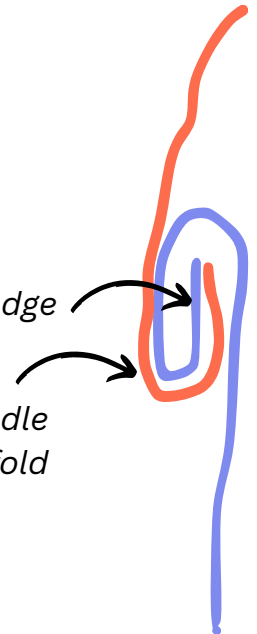


fig. 3

inside folded top edge

ribbon bag handle
tucked into fold



pic. d

side seam . ————

perpendicular flat
bottom seam ————

